



Build your intelligent workspace with Lenovo and Intel®

Your guide to creating a successful digital workspace with Lenovo, Intel®, and XMA



Lenovo

Changes aren't going to stop coming



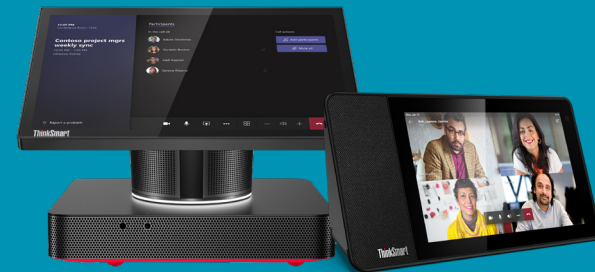
We're well and truly in the age of hybrid working now. But just because pandemic restrictions aren't dominating the headlines anymore doesn't mean that we're done changing.

Teams are still dispersed, but they're not any less productive. As countless organisations have discovered the benefits of flexible working, they've embraced it as the future – some even shutting their offices for good.

With **82% of businesses** intending to encourage at least some remote working as employees return to the workplace, the IT transformation you complete now will serve to protect your organisation for the long term. In this age of desk-less productivity, IT teams must supply users with the technology they need to work effectively, securely, and collaboratively.

Lenovo's range of future-ready smart devices – the first in this growing market – really unlocks the potential of this new way of working. These devices are central to an intelligent, digital workspace that meets the evolving needs of your teams.

But, when coupled with the power of Intel® technology or the Intel® Evo™ hardware framework, Lenovo devices take on a new form – driving ambitious professionals to overcome the most challenging workloads in the most demanding environments.



ThinkSmart View and ThinkSmart Hub make collaboration more productive and enjoyable, while giving users back space for their work.

The intelligent workspace of today

During the pandemic, we've all been talking about "the future". The truth is those organisations that are going to get ahead are those that have realised the future is already here. And they'll be ready to change as soon as they need to.

It's entirely possible to build a truly intelligent, hybrid workspace right now – thanks to Lenovo, Intel®, Microsoft, and XMA – and reap the competitive benefits, which include:

Maintain continuity through uncertainty

With a cloud-centric Lenovo digital workspace system in place, organisations needn't worry about future uncertainty – whether that be further waves of a pandemic, natural disasters or even something as simple as power outages.

Blend freedom with security

Giving users freedom from the office doesn't mean sacrificing security. In fact, with the right infrastructure, support and cloud security, your intelligent workspace could be more secure than in-office operations.

Create growth and foster innovation

When people are comfortable in their workspace, they'll perform at their peak. When we embrace creative ways of working, creative work often results.

Empower through performance

With Intel®-powered Lenovo technology, users gain a professional edge that allows them to deal with complex workloads – unlocking their true potential through raw power and enduring performance.

Help your users work how they work best

An intelligent workspace (in which users are empowered with the latest Lenovo, Intel®, and Microsoft technology) gives people the ability to work in the style and location they desire. That means better results and happier employees.

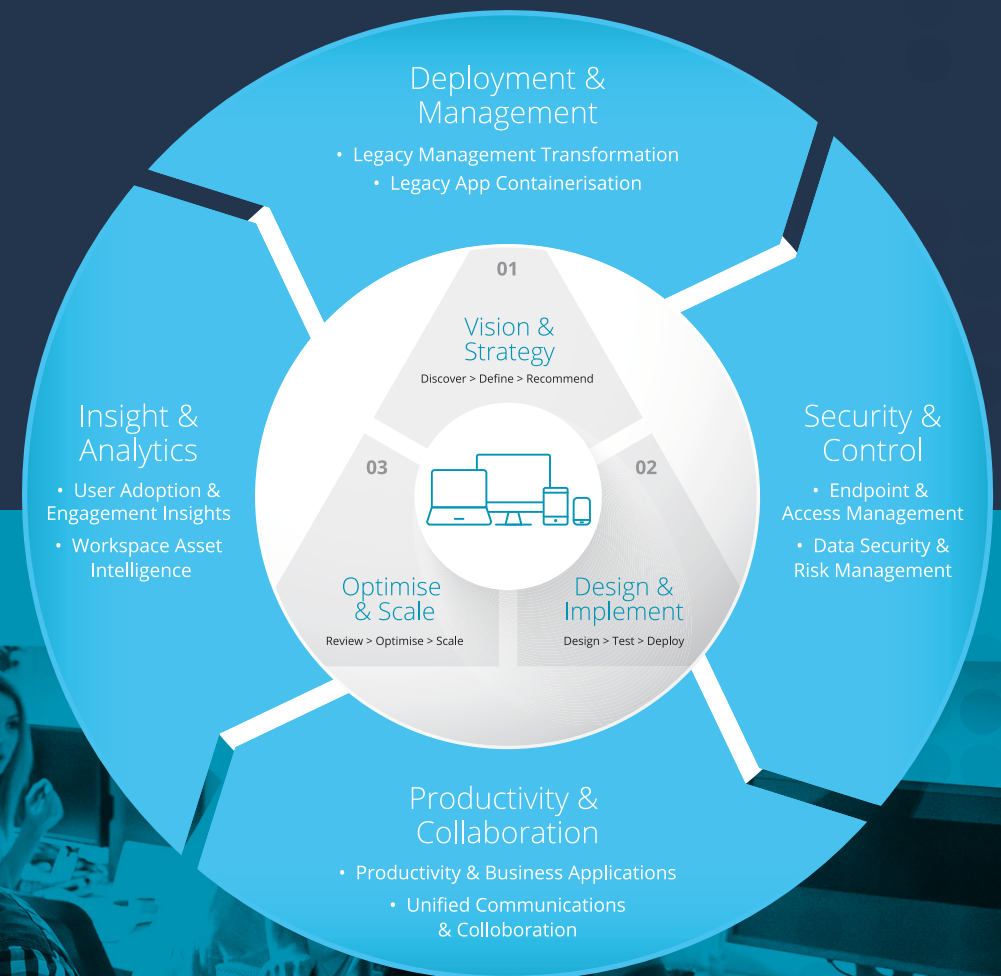
Bring digital and physical workspaces together, creating a more connected workforce

Just because people aren't working in the same office, doesn't mean they're not working together. In fact, we've seen that technology like Microsoft Teams can bring people working from across the globe together in one mission – and with Lenovo ThinkSmart, Teams is even more powerful.

How to build the modern intelligent workspace

Your company's working practices have been turned upside-down, which has tipped the scale from standard ways of working to being flexible by design. As you adapt to a changing business model, it will take an intelligent IT strategy to deliver one digital workspace that will meet your ongoing needs.

An intelligent workspace transformation is an ongoing process – in other words, if you want to succeed in the future, you should never stop transforming. This circular process is composed of three key stages and four overarching practical considerations.



Making the right moves

1. Assess the current state of your infrastructure and teams

- You need to be sure you're equipped for the journey. Be sure that the technology you choose supports your goals.
- Be sure to get insight from the people who will use the technology in their day to day – use collaboration tools and analytics to find the areas of your operation that need attention.

Lenovo ThinkSmart devices are designed for modern working. Through its high-performance 8th Gen Intel® Core™ i5 processor, ThinkSmart Hub seamlessly transforms any room into a worldwide conference centre. ThinkSmart View frees up PC resources and screen space by moving collaboration features onto a dedicated display.

2. Connect and empower

- When it becomes time to roll out the digital workspace technology, make sure you have everything you need for success. Leverage XMA's experience, Intel®'s high-performance technology, and Lenovo's deployment installation and integration assistance.
- Be sure to implement the right technology for your budget and needs. Consider whether your team requires simple notebook devices, or powerful mobile workstations. Pair either of these devices with ThinkSmart View to increase their flexibility and ensure consistency in collaboration.

Lenovo Smart Office Services provides personalised services that help users get more out of their Lenovo ThinkSmart Hub meeting room devices.

XMA can also set you up with a central, consistent platform through which employees can effectively self-service their IT needs. This will save your IT team time and lead to a more satisfied, engaged user base.

For more demanding roles, consider the ThinkPad P Series – a range that draws on advanced Intel® Core™ processors to provide the power of a desktop workstation with the portability of a laptop. When paired with ThinkSmart View, employees enjoy the ultimate hybrid working and collaboration experience.

3.

Keep it secure

- Keeping your organisation secure is still very much achievable with the appropriate solutions in place.
- This could include Endpoint Management, with a single interface to manage PCs, laptops, mobiles, tablets and other devices, and user access.

XMA works to modernise the management of every endpoint, reducing costs while improving security – regardless of your organisation's device ownership model.

The in-built privacy features of ThinkSmart View – including a camera shutter and mute button – serve to protect privacy in the home and office.

ThinkSmart Hub is protected by a Trusted Platform Module 2.0 and BIOS locking technology, just like you would find in a modern work PC, meaning your sensitive meetings are protected from prying eyes. Additionally, the 8th Gen Intel® Core™ i5 processor integrates Intel® Boot Guard protection – helping keep the pre-OS environment secure from viruses and malicious software attacks.

4.

Choosing the right partners

- Work with partners that understand the specific challenges of your organisation and sector.
- XMA has been a trusted partner to the public and private sectors for decades. We understand Microsoft platforms, how they can be most effectively used in each stage of digital transformation, and how they integrate into a variety of ecosystems.

XMA is dedicated to helping teams maximise their return on investment and reset the balance for stronger, more effective operations.

With the power of Intel®, Lenovo's first-in-the-market technology is enabling teams to work from anywhere and become more productive and collaborative at the same time.

The Lenovo digital workspace

Today, Microsoft Teams is a familiar and respected tool, absolutely central to many organisations' hybrid working set-ups. The Lenovo ThinkSmart range unleashes the tremendous collaboration potential of Teams.

Lenovo ThinkSmart View

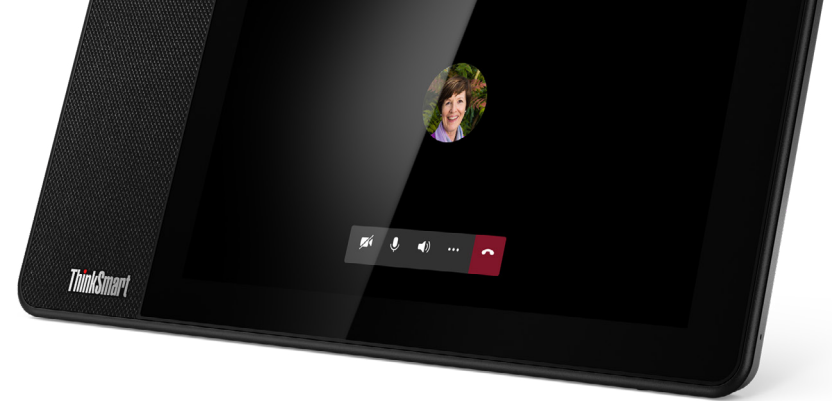
ThinkSmart View is your own personal productivity assistant. Whether placed on the office desk or taken home, ThinkSmart View is the perfect companion for those collaborating on Teams (or who just want a bit more screen space).

Users can make voice and video calls on ThinkSmart View without impacting the work in progress on their main device. They'll also experience greater audio quality and richer content-centric meetings.

ThinkSmart View makes productivity possible in just about any space.

Key features

- Ambient touchscreen
- Cortana voice-activated smart assistant
- All-in-one Teams display
- In-built camera shutter and mute button



The Lenovo digital workspace

Lenovo ThinkSmart Hub

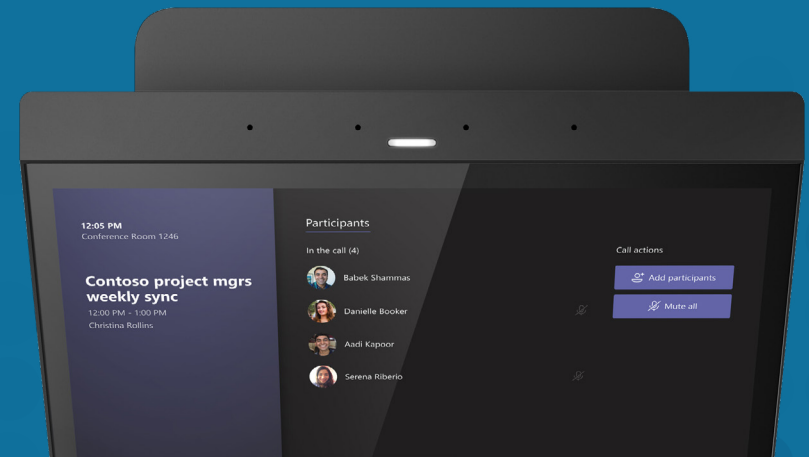
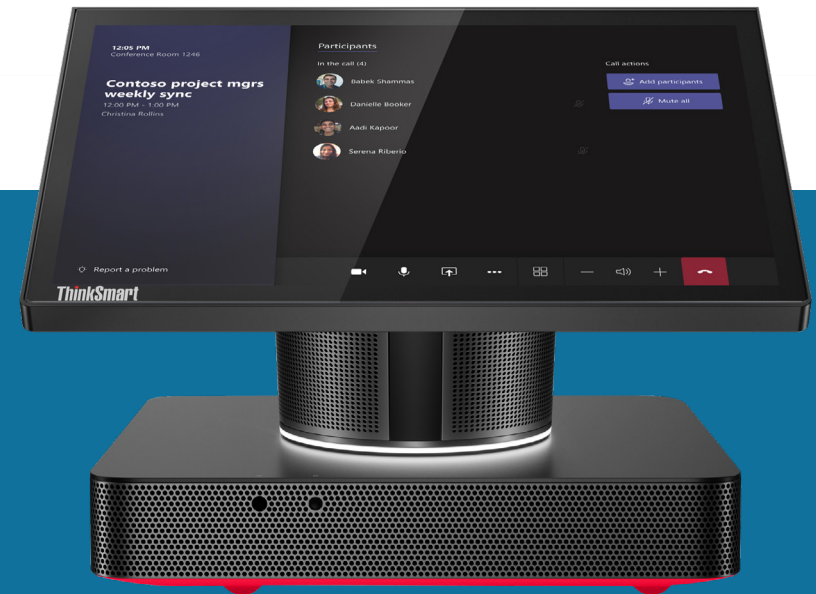
ThinkSmart Hub is the ultimate meeting room device, built to make meetings more efficient than ever with its 8th Gen Intel® Core™ i5 processor.

With four built-in, premium-tuned 3W speakers and four dual-array mics, users will feel like they're in the room with whoever is on the call, even if they are, literally, a world away. And with one-touch meeting start, meetings start on time, every time.

It's also backed by Lenovo ThinkShield – one of the most advanced, customisable security suites in the world. For organisations in sectors like government, health or finance, this is a collaboration tool that you can really trust.

Key features

- 10.1" antiglare, smudge-resistant FHD display
- 8th Gen Intel® Core™ i5-8365u processor
- 128 GB of internal storage
- Minimal footprint to save meeting room space



The Lenovo digital workspace



Intel® Evo™ laptops from Lenovo

Intel® and Lenovo have partnered to co-engineer a range of premium Evo™-certified laptops – featuring the exceptional power and performance needed to drive productivity and collaboration in today's hybrid world.

As a minimum, Intel® Evo™ laptops are required to have an 11th generation Intel® Core™ processor and Intel® Iris® Xe or Intel® Iris® Xe MAX graphics – ensuring that any Evo™ device far exceeds the high demands of modern organisations.



ThinkPad P Series Laptops

When workloads are heavy and taxing on technology resources, the ThinkPad P Series shines as the mobile workstation of choice. As Lenovo's top-selling brand, organisations have fully embraced its Intel®-based performance – seeing exceptional results across multiple industry sectors thanks to the power of the latest Core™ or Xeon® processors.



ThinkPad L Series Laptops

Built to provide great performance while keeping costs down, ThinkPad L Series laptops put a focus on reliability and value. But even while being a more economical choice, the ThinkPad L13 Gen 2 offers exceptional 11th Gen Intel® performance and graphics – ideal for overcoming business challenges cost-effectively.

The Lenovo digital workspace



Lenovo ThinkSmart Manager

Save time and money while simplifying office management – both on- and off-site.

ThinkSmart Manager gives IT teams complete fleet management tools for Lenovo smart office devices. It allows them to deploy, configure, protect and auto-update ThinkSmart View and ThinkSmart Hub devices.

ThinkSmart Manager comes free of charge for the first year of use with ThinkSmart devices.

Key features

- Optimise device management over the cloud
- Single console for the entire ThinkSmart fleet
- Advanced security configurations
- Tiered plans for cost-efficiency



Lenovo Premier Support

Get instant access to Lenovo support specialists, 24/7. Elite technicians are always on call to provide advanced troubleshooting of Lenovo devices. You benefit from consistent, accountable and transparent support for any issue.

If hardware needs replacing at any point, you can count on next-business-day repair and prioritised parts access. It all helps to keep teams operating at full capacity, wherever they may be.

Premier Support is included with all ThinkSmart devices.



Your partner for workspace intelligence

At XMA, we are dedicated to helping IT teams maximise their return on investment and, ultimately, reset the balance for stronger, more effective operations. If you're looking to maintain continuity through uncertainty, build agility into fixed systems and bring digital and physical workspaces together, then we are the partner for you.

We will take your business through a multi-stage assessment to understand your current cloud readiness and security. We'll also use our advisory expertise to align user needs and technology, so that your employees always receive a user-friendly, personalised experience.

We undertake this work so that we can help you:

- Evaluate and prepare the business case
- Identify your advocates
- Connect and empower
- Build momentum and acceptance
- Measure, improve and advance

Flexible working, powered by Intel®

Intel® processors make hybrid working possible. From the 8th Gen Intel® Core™ i5-8365u within the ThinkSmart Hub to the Intel® Xeon® W-11955M vPro® that powers the high-performance ThinkPad P Series Gen 2 portable workstation, it's portable processing that unlocks truly smart working.

[LEARN MORE ABOUT INTEL](#)



Lenovo

Transform with XMA and Lenovo

It's your specific challenges and aspirations that make you different. That's why, when you're looking for answers, you need a solution provider that starts by asking the right questions.

We have all the expertise you need to uncover the impact you want to see. By first understanding the impact you want to achieve, XMA is able to turn outcome-led discussions into outcome-based solutions that improve individual experiences.

It's not what XMA can do. It's what XMA can do for you. Let us know what that is by getting in touch:

0115 846 4000

info@xma.co.uk

